

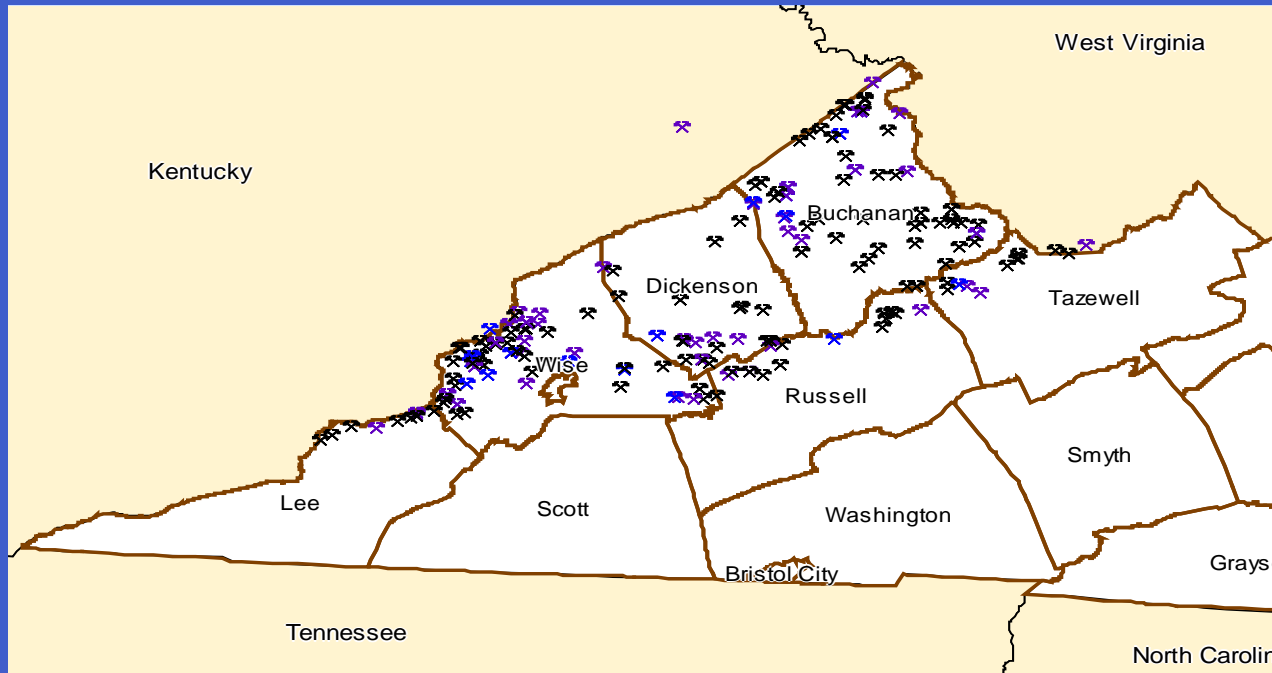
# The Virginia Department of Mines, Minerals and Energy

*We enhance the development and  
conservation of energy and mineral  
resources in a safe and environmentally  
sound manner to support a more  
productive economy.*

# Goals of the DMME Strategic Plan

- *Provide for safe and environmentally sound mineral resource extraction*
- Encourage economic development through our customers' wise management of Virginia's energy, mineral, land, and water resources

# Virginia coalfields encompasses seven counties in far Southwest Virginia





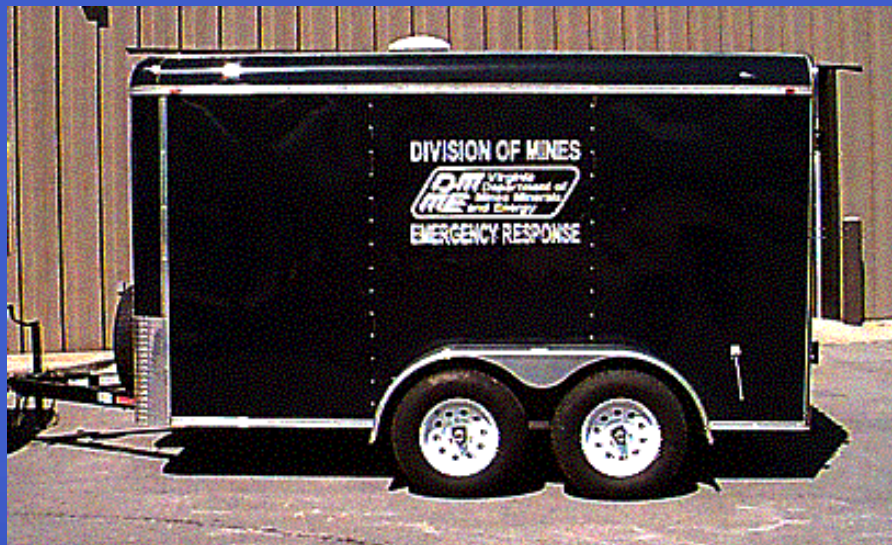
# DMME Divisions

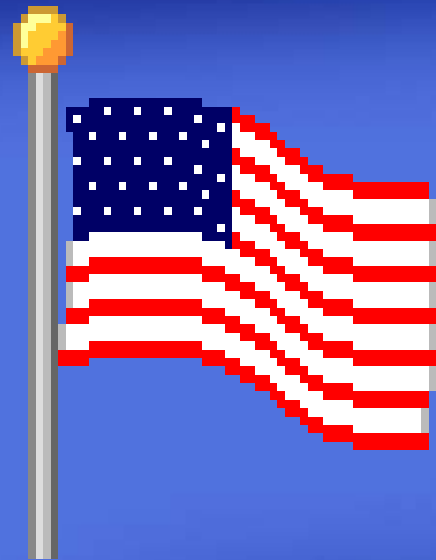
- Division of Mines\*
- Division of Mined Land Reclamation\*
- Division of Gas & Oil\*
- Division of Mineral Mining\*
- Division of Energy
- Division of Mineral Resources
- Division of Administration

\* denotes Enforcement Division

# DM Emergency Response Teams

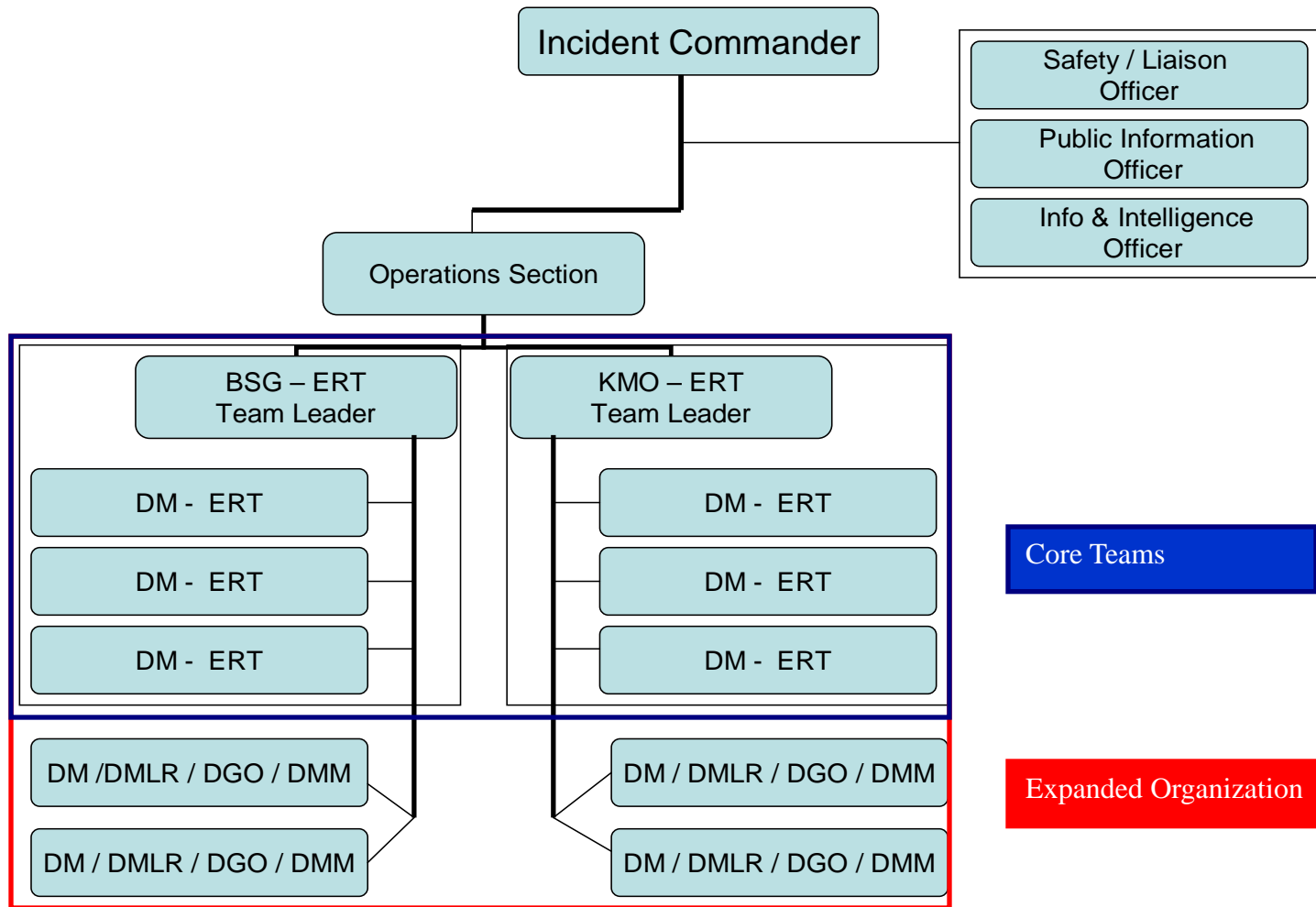
- **Two experienced and trained teams.**
  - Big Stone Gap Area - Wise County
  - Keen Mountain Area – Buchanan County
- **Two trailers equipped with rescue equipment.**





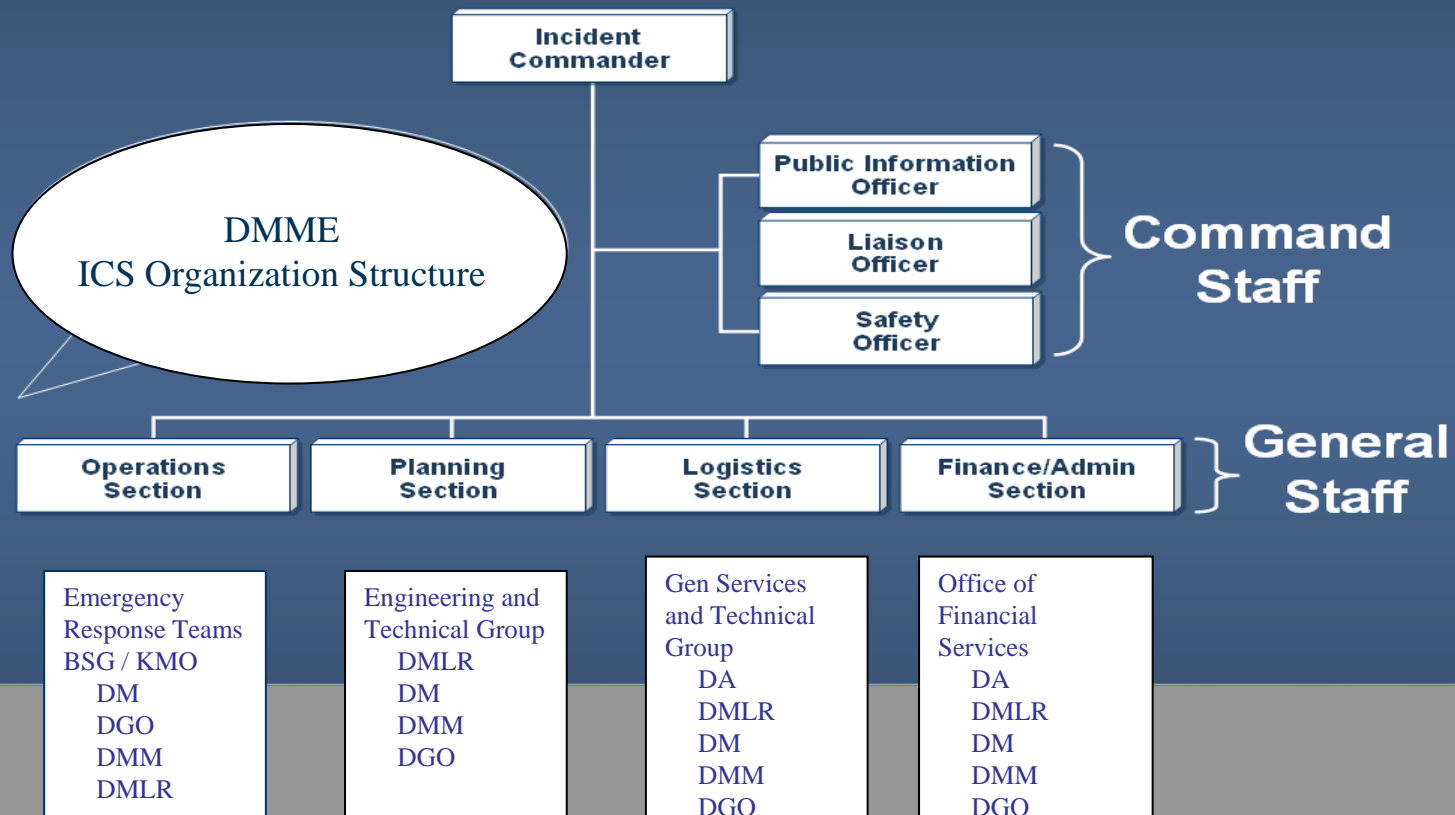
# National Incident Management System (NIMS)

# Emergency Response Team Structure



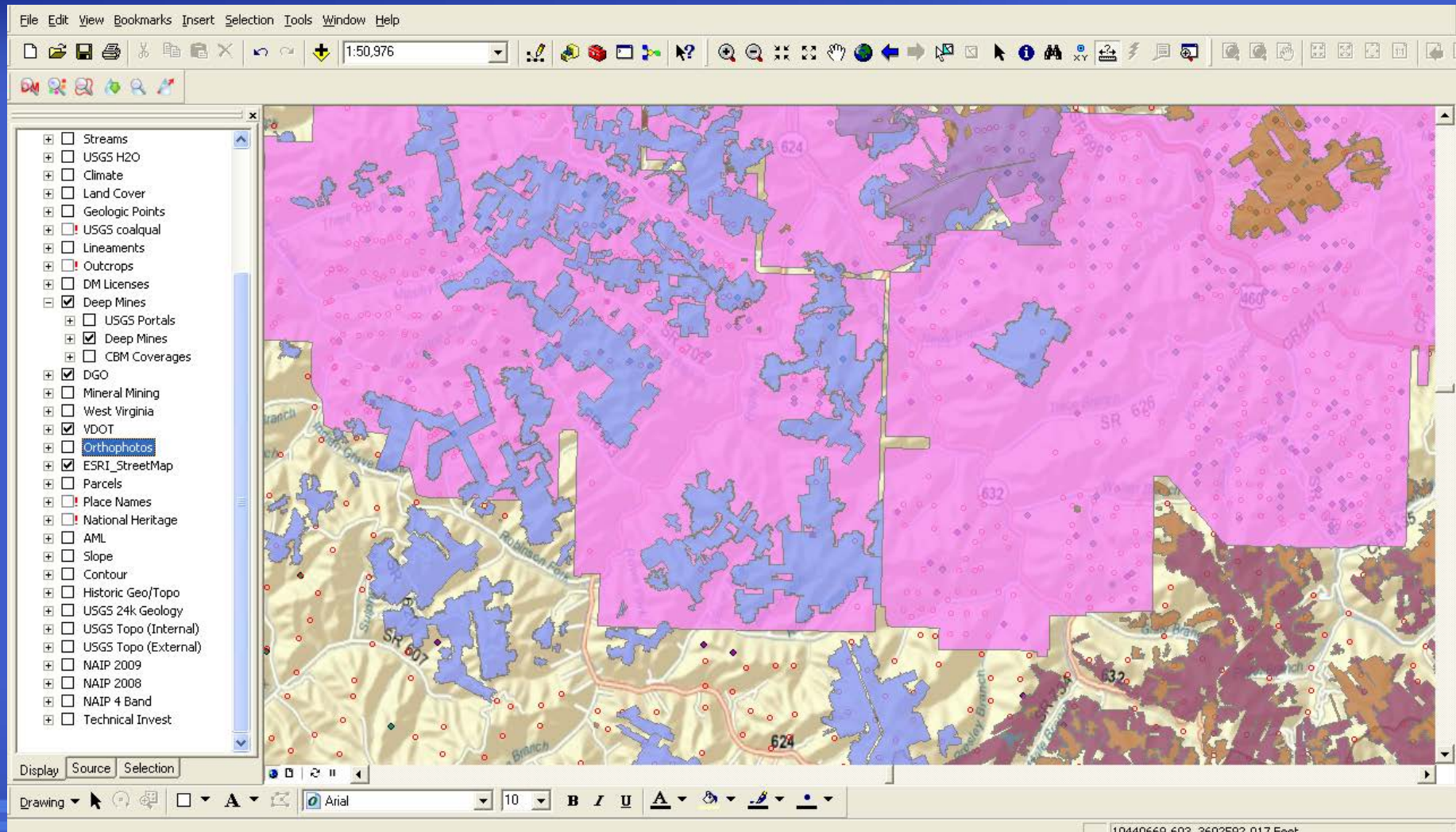
# State Agency Requirements

## ICS Organization: Review





# Mapping Capabilities

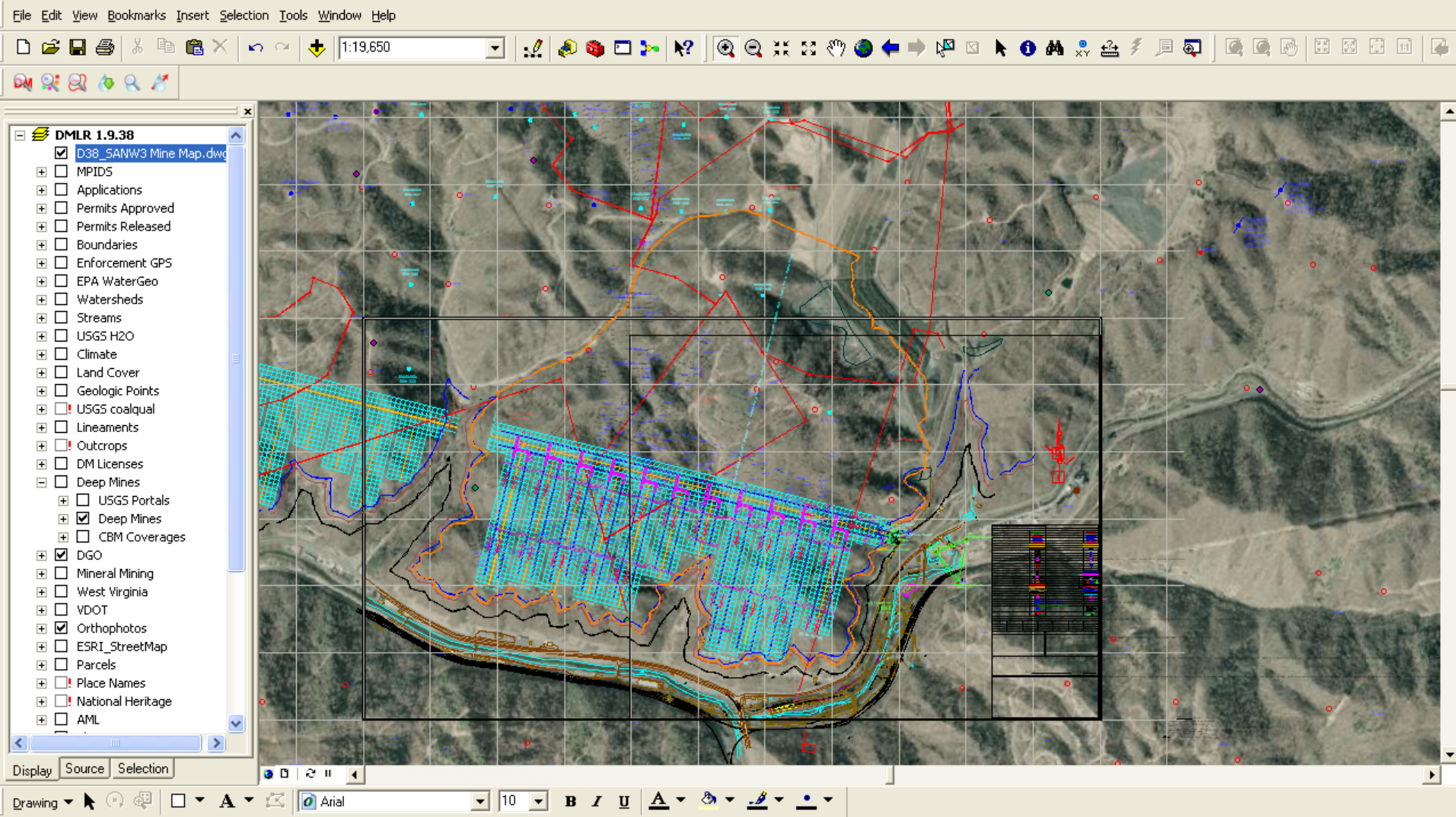


The screenshot displays a GIS application window with a menu bar (File, Edit, View, Bookmarks, Insert, Selection, Tools, Window, Help) and a toolbar. The map area shows a terrain with various colored overlays: pink for deep mines, blue for streams, and brown for land cover. A legend on the left lists the following layers:

- Streams
- USGS H2O
- Climate
- Land Cover
- Geologic Points
- USGS coalqual
- Lineaments
- Outcrops
- DM Licenses
- Deep Mines
  - USGS Portals
  - Deep Mines
  - CBM Coverages
- DGO
- Mineral Mining
- West Virginia
- VDOT
- Orthophotos
- ESRI\_StreetMap
- Parcels
- Place Names
- National Heritage
- AML
- Slope
- Contour
- Historic Geo/Topo
- USGS 24k Geology
- USGS Topo (Internal)
- USGS Topo (External)
- NAIP 2009
- NAIP 2008
- NAIP 4 Band
- Technical Invest

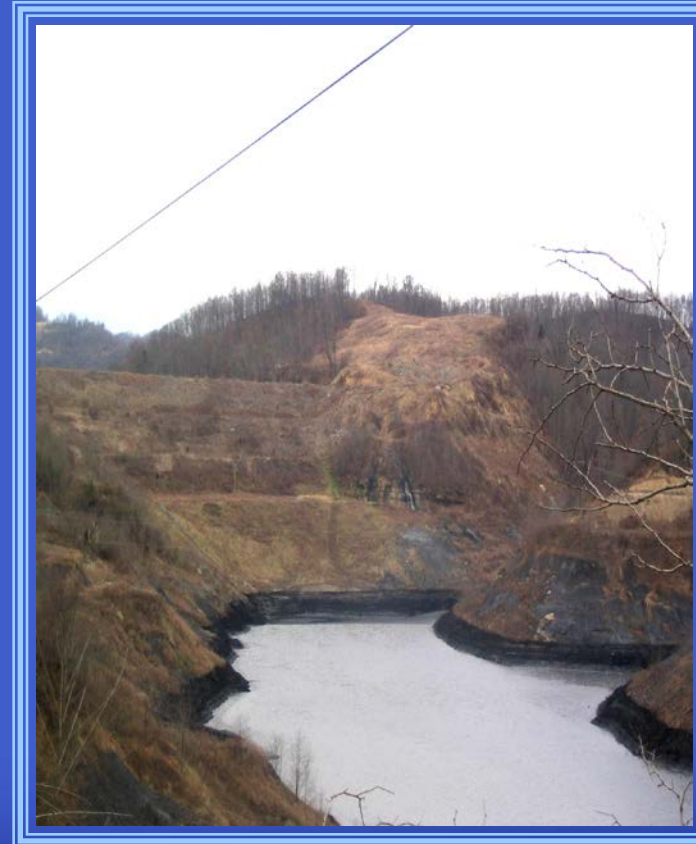
The map interface includes a scale bar (1:50,976), a drawing toolbar, and a status bar at the bottom showing coordinates: 10440669.603, 3602592.017 Feet.

# Mapping Capabilities

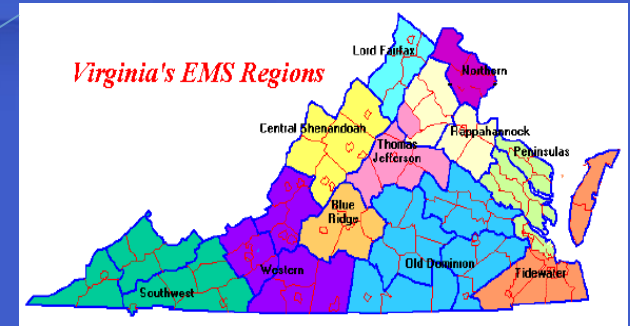


# Safety At Mine Impoundments

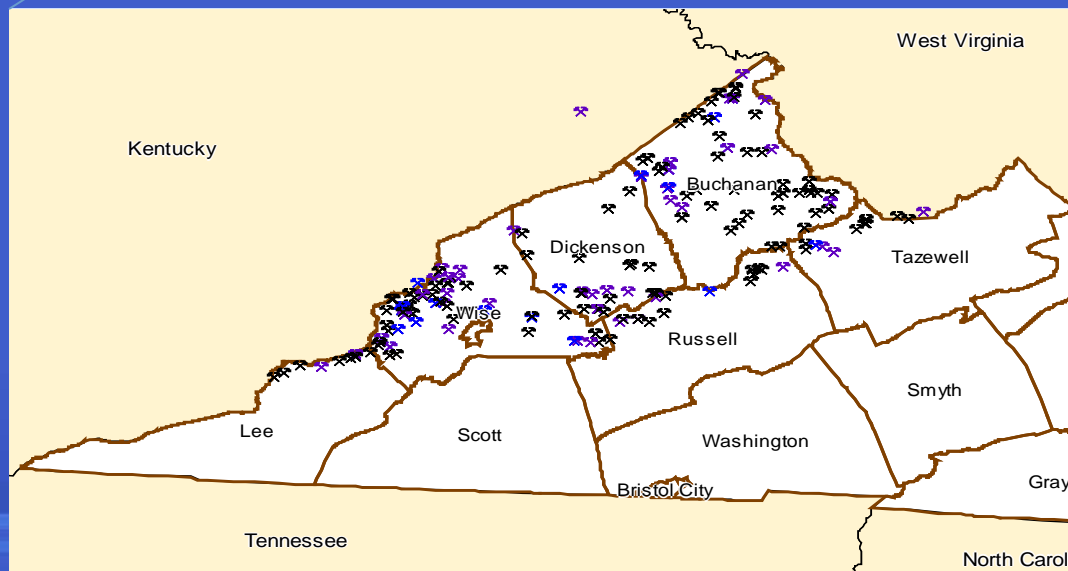
- ❖ **Emergency Notification and Evacuation Plan**
- ❖ **Inspections**
  - **Once every 7 days**
  - **More often with hazardous conditions**



# Areas of Emergency Response



Virginia's coalfields are within Region 4 of Emergency Management Operations.



# VDEM

- State's Emergency Management Agency
- Virginia Emergency Operations Center
- Partner with Other State Agencies
- Direct Support to Localities

**VDEM: Working to Protect People, Property and Our Communities**



FOR OFFICIAL USE ONLY

# Legal Authority

- Robert T. Stafford Act – Federal
- Title 44, Code of Virginia - State

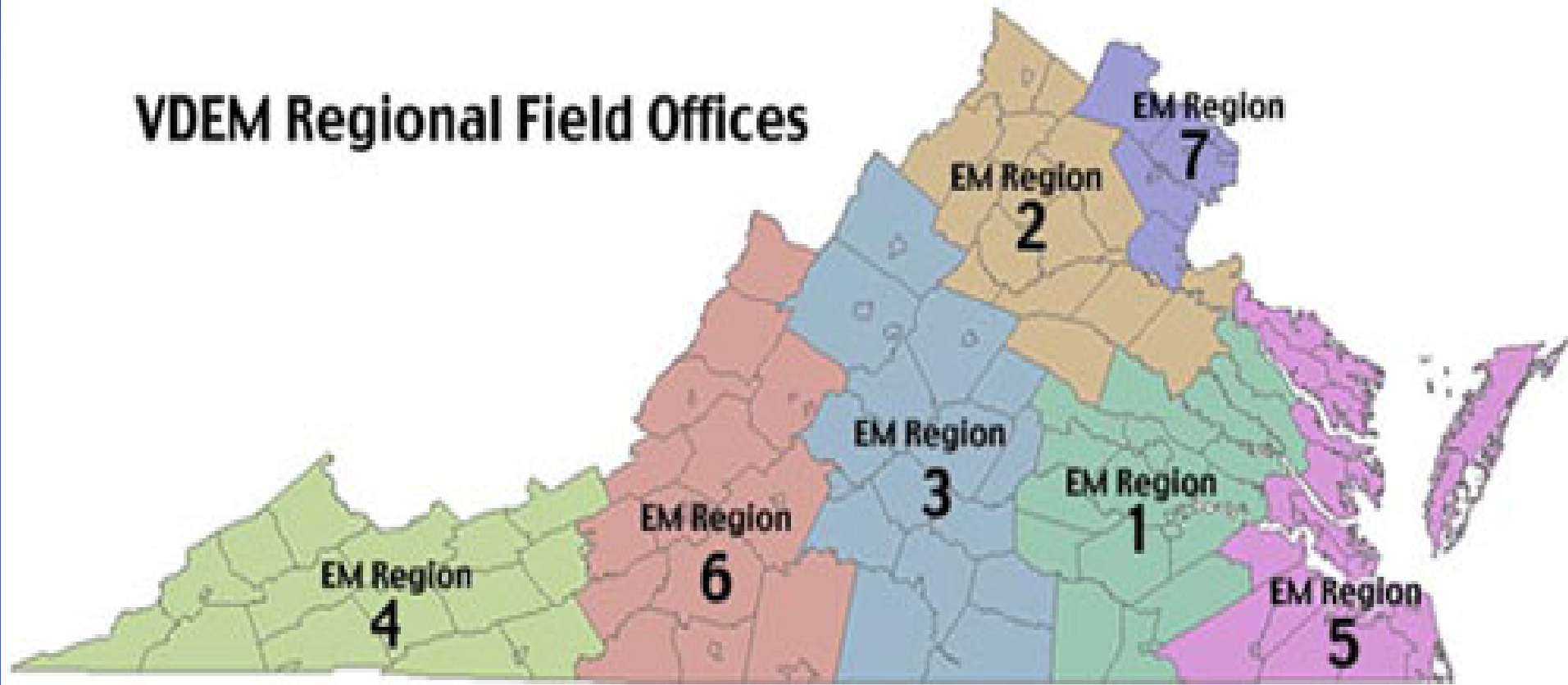
# VDEM

- Coordinates the state's preparedness, response, recovery and mitigation efforts.
- Director of VDEM is the State Coordinator of EM.
- The Governor is the State Director of EM.

FOR OFFICIAL USE ONLY



## VDEM Regional Field Offices



**VDEM: Working to Protect People, Property and Our Communities**



FOR OFFICIAL USE ONLY



## VDEM Regional Coordinators

- Assist and support localities before, during and after an event.
- Specialized communications abilities
- Eyes and ears of the state
- Training and exercises
- Plan development
- Coordinating State Response - regionally
- Networking

# The VEOC

- Emergency Support Functions
- The “VERT”
- Secure facility in Richmond
- Coordination center for all state efforts.

# The VEOC



# ESF Work Areas



FOR OFFICIAL USE ONLY

# Joint Information Center



# Main Floor



# VEOC Communications Center



FOR OFFICIAL USE ONLY

# REGION 4 & 6 MOBILE COMMAND POST





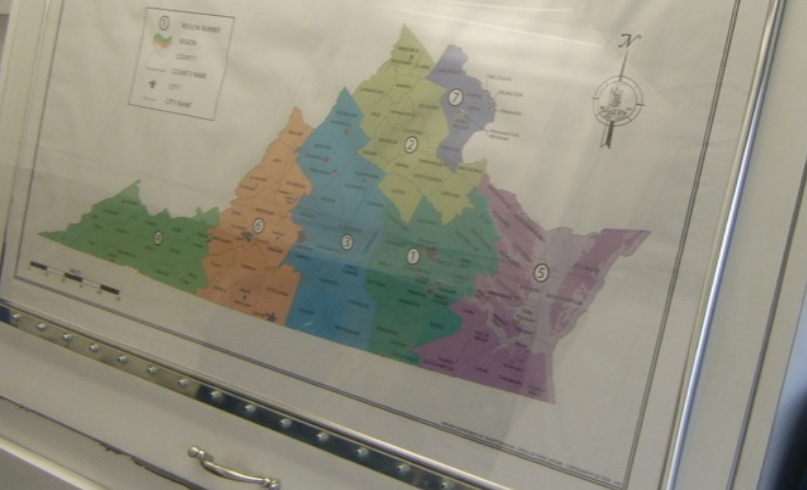
# 5 WORKSTATIONS & 1 COMPUTER STATION



31 AUG 2009



### Emergency Management Regions Virginia Department of Emergency Management



31 JAN 2011

# 1 of 2 COMMUNICATIONS AREAS





31 JAN 2011

# CONFERENCE ROOM



31 AUG 2009



31 JAN 2011

# REGION 4 & 6 Mobile Command Post

- Space for Command and Control Activities (5 work stations & 1 Computer Station)
- 2 Interoperability Gateway Devices (ICRI)
- 19 Portable Radios
- Satellite Phone
- Sirs and Stars Radios
- Generator

# VDEM MOBILE COMMAND POST





# VDEM Mobile Command Post

- 600 sq ft of space for Command and Control Activities (16 work stations)
- Interoperability Gateway Device
- Satellite Voice and Data
- Video Conferencing
- Mast mounted camera and scene lighting
- GIS
- Generator

# VDEM Mobile Command Post



## Emergency Management **UPDATE**

Issued Biweekly for the Virginia Emergency Management Community

*Dec. 3, 2008*

### **New mobile command post**

The Commonwealth has a new mobile command post available to support local emergency response efforts upon request through the Virginia Emergency Operations Center. The MCP can communicate using VHF low- and high-band, UHF, 800 MHz, amateur radios and the Statewide Agencies Radio System. These systems are interoperable with each other and with local systems, so that they can provide a communications network when local networks are overwhelmed. The MCP is 50 feet long, 13 feet high and weighs more than 50,000 pounds. Both sides expand to increase the width to 14 feet, providing more than 600 square feet of usable space and 16 work stations to support command and control operations. The MCP can provide satellite, audio and video communications and operate for several days before it needs to refuel. It also provides wireless Internet, Voice over IP and analog telephone access, as well as a video feed from the area surrounding the unit. Two 12.5 kW generators provide power for up to 12 laptop stations, digital broadcast and satellite television receivers, and communications equipment.

# VDEM TECHNICAL SUPPORT UNIT (TSU)



## • VDEM Technical Support Unit

• (TSM) Numerous Public Safety Radios in all bands (VHF, UHF, 700/800 MHz, Marine, Aircraft, STARS, Nextel Direct Connect)

- Satellite Voice and Data Communications
- Act as a Wi-Fi hotspot or interface into a LAN
- Full Amateur Radio Suite
- Streaming video
- Generator

# VDEM

## QUESTIONS

### Thank You

[william.richardson@vdem.virginia.gov](mailto:william.richardson@vdem.virginia.gov)



FOR OFFICIAL USE ONLY